



www.kcc-beauty.com



For more information on
KCC Beauty, please contact
us as below.

KCC Beauty Headquarter
344, Sapyeong-daero, Seocho-gu, Seoul, Korea
Tel: +82 2 3480 5000 **Fax:** +82 2 3480 5887
e-mail: represent@kccworld.co.kr

KCC Beauty EMEA Office
Basildon Chemical Co. Ltd., Kimber Road,
Abingdon, Oxfordshire, OX14 1RZ, UK
Tel: +44 (0) 1235 526677 **Fax:** +44 (0) 1235 524334
e-mail: info@kcc-beauty.com

www.kccsilicone.com

PERSONAL CARE PRODUCT BROCHURE

KCC Beauty,
Formulating the Future



2020. 02



Corporate Headquarters

344, Sapyeong-daero, Seocho-gu, Seoul, Korea
Tel : (82)-2-3480-5000, Fax : (82)-2-3480-5436, e-mail : w3master@kccworld.co.kr

Kunshan, China

KCC (Kunshan) Co., Ltd. (Plants 1)
No.1388 Huangpujiang South Road, Qiangdeng Town, Kunshan City, Jiangsu, China
(Zip code : 215341)
Tel : (86)-512-5746-9000, Fax : (86)-512-5746-9009, e-mail : kcckunshan@kccworld.co.kr

KCC (Kunshan) Co., Ltd. (Plants 2)
No.198 Shanpu East Rd, Qiangdeng Town, Kunshan City, Jiangsu, China (Zip code : 215341)
Tel : (86)-512-5017-2006, Fax : (86)-512-5795-0803, e-mail : kcckunshan@kccworld.co.kr

Shanghai Branch Office of KCC (Kunshan) Co., Ltd.
11F, Shanghai HVA Building, No.898 Puming Road, Shanghai China (Zip code : 200120)
Tel : (86)-21-6235-1540, Fax : (86)-21-6278-6338, e-mail : kccshanghai@kccworld.co.kr

Qingdao Branch Office of KCC (Kunshan) Co., Ltd.
Room 1506, Ban Dao International Building, No.182-8, Haier Road, Laoshan District,
Qingdao, China (Zip code : 266100)
Tel : (86)-532-5569-0655, Fax : (86)-532-5569-0658, e-mail : kccqingdao@kccworld.co.kr

Yancheng Branch Office of KCC (Kunshan) Co., Ltd.
Room 1207, 2 Building, Huabang International East Mansion Tinghu District, Yancheng City,
Jiangsu, China (Zip code : 224000)
Tel : (86)-515-8990-9768, Fax : (86)-515-8988-8068, e-mail : kccshanghai@kccworld.co.kr

Hefei Branch Office of KCC (Kunshan) Co., Ltd.
Room1307, 11 Building, Paramount Famous Square, No.588 Lianhua Road Economic
Development District, Hefei City Anhui, China (Zip code : 230000)
Tel : (86)-551-6261-8116, Fax : (86)-551-6261-7260, e-mail : kcchefei@kccworld.co.kr

Beijing, China

KCC Chemical (Beijing) Co., Ltd.
No.51 West of Shuntong Road, Renhe Town, Shunyi District, Beijing, China
(Zip code : 101300)
Tel : (86)-10-8949-8181, Fax : (86)-10-8949-8144, e-mail : kccbeijing@kccworld.co.kr

Dalian Branch Office of KCC (Beijing) Co., Ltd.
Room 905, Grand Central IFC, No.128 Jinma Road, Dalian Development Area, Dalian City,
Liaoning Province, China (Zip code : 116000)
Tel : (86)-411-8853-1785, Fax : (86)-411-8870-8795, e-mail : kccdalian@kccworld.co.kr

Guangzhou, China

KCC (Guangzhou) Co., Ltd.
No.9 Doutang Street, Yonghe Economic Zone, Guangzhou, China (Zip code : 511356)
Tel : (86)-20-3222-1111, Fax : (86)-20-3222-2021, e-mail : kccguangzhou@kccworld.co.kr

Guangzhou Branch Office of KCC (Guangzhou) Co., Ltd.
B-370383707, Center Plaza, No.161 Linhe West Road, Guangzhou, China
(Zip code : 510613)
Tel : (86)-20-3831-9780, Fax : (86)-20-3831-9789, e-mail : kccguangzhou@kccworld.co.kr

Chongqing, China

KCC (Chongqing) Co., Ltd.
No.26 Huanan Road, Yanjia Economic Development, Changshou District, Chongqing City,
China (Zip code : 401220)
Tel : (86)-23-4076-6611, Fax : (86)-23-4076-6708, e-mail : kccchongqing@kccworld.co.kr

Chongqing Branch Office of KCC (Chongqing) Co., Ltd.
Room 1106, Block C, Dongli International Building, No.62 East Taishan Road, Northern
New District, Chongqing City, China (Zip code : 401122)
Tel : (86)-23-6701-9021, Fax : (86)-23-6785-3414, e-mail : kccchongqing@kccworld.co.kr

Chengdu Branch Office of KCC (Chongqing) Co., Ltd.
No.15 Xiu Yuan East Road, Chenghua District, Chengdu City, Sichuan Province, China
(Zip code : 610000)
Tel : (86)-155-2806-5199, e-mail : kccchengdu@kccworld.co.kr

Japan

KCC Japan Co., Ltd.
Yurakuchō Denki Bldg. South wing 12F, 1-7-1, Yurakuchō, Chiyodaku, Tokyo, Japan
(Zip code : 100-0006)
Tel : (81)-3-6895-9361-3, Fax : (81)-3-6895-9364, e-mail : tokyo@kccworld.co.kr

Vietnam

KCC (Vietnam) Co., Ltd.
Road 1, Long Thanh Industrial Zone, Long Thanh District, Dong Nai Province, Vietnam
(Zip code : 815300)
Tel : (84)-251-351-4678, Fax : (84)-251-351-4684, e-mail : mbw1916@kccworld.co.kr

KCC (HA NOI) Co., Ltd.
Yen Phong Industrial Zone, Dong Phong Ward, Yen Phong Dist, Bac Ninh Province, Vietnam
(Zip code : 221400)
Tel : (84)-222-3699-388, Fax : (84)-222-3699-389/390, e-mail : crekim@kccworld.co.kr

KCV Hochiminh Office.
Room 4, 12th Floor, Pearl Plaza, 561 Dien Bien Phu Str., Ward 25, Binh Thanh Dist., HCMC,
Vietnam (Zip code : 717066)
Tel : (84)-28-6269-0305, Fax : (84)-28-6269-0316, e-mail : qh9871@kccworld.co.kr

KCC (Hanoi) Hanoi Office.
Vinaconex 9 Tower At Pham Hung Road, Me Tri-Tu Liem -HA NOI (10 floor), Vietnam
(Zip code : 125000)
Tel : (84)-24-3787-8647, Fax : (84)-24-3787-8646, e-mail : crekim@kccworld.co.kr

Malaysia

KCC Paints Sdn. Bhd.
Lot113 / No.1, Jalan Anggerik Mokara 31/54-55, Seksyen 31, Kota Kemuning, Shah Alam,
Selangor Darul Ehsan, Malaysia (Zip code : 40460)
Tel : (603)-5122-2900, Fax : (603)-5122-1800/1900, e-mail : kcc@kccpaint.com.my

India

KCC Paint (INDIA) PRIVATE LIMITED
Plot No K-20 Sipcot Industrial Park, Phase II, Mambakkam Sriperumbudur Tamil Nadu,
India (Zip code : 602106)
Tel : (91)-44-2714-2000, Fax : (91)-44-2714-2020, e-mail : sales@kccindia.in

Pune Branch Office of KCC Paint (INDIA) PRIVATE LIMITED
Plot No C-22 MIDC Industrial Area Phase-I, Mahalunge Chakan Tal-Khed, Dist-Pune,
Maharashtra, India (Zip code : 410501)
Tel : (91)-22-3069-6254-5, e-mail : sales@kccindia.in

Indonesia

PT. KCC INDONESIA
Belleza Permata Hijau Office Tower, Lantai 17 Unit 9 Jl Letjen Soepeno 34, Permata Hijau,
Jakarta, Indonesia (Zip code : 12210)
Tel : (62)-21-3002-7185-6, Fax : (62)-21-3002-7187

Singapore

KCC (Singapore) Pte. Ltd.
1 Tuas Avenue 2, Singapore (Zip code : 639441)
Tel : (65)-6862-0100, Fax : (65)-6863-0679, e-mail : ssong@kccpaint.com.sg

Turkey

KCT KCC Boya Sanayi Ve Ticaret Ltd. Sti.
Gebze Organize Sanayi Bolgesi (Tembelova mevki) 3100 Cad. No.3107, Gebze/Kocaeli,
Turkey (Zip code : 41400)
Tel : (90)-262-645-0200, Fax : (90)-262-645-0209, e-mail : turkey@kccworld.co.kr

UK

KCC Basildon Chemical Company Ltd.
7 Kimber Road, Abingdon, Oxfordshir, England (Post code : OX14 1RZ)
Tel : (44)-1235-205003, Fax : (44)-1235-524334, e-mail : hukim@kccworld.co.kr

Germany

KCC Europe GmbH
Hansaring 61, 50670 Köln/Cologne, Germany (Zip code : 50670)
Tel : (49)-221-6694270, Fax : (49)-221-1612100 e-mail : hukim@kccworld.co.kr

UAE

KCC Dubai Office.
Unit No 501, Indigo Icon Tower, Cluster F, Jumeirah Lakes Towers, Dubai, UAE
Tel : (971)-4453-4115/6, Fax : (971)-4453-4117, e-mail : dubai@kccworld.co.kr

IRAN

KCC Iran Office.
Unit 42, 4th Floor, No.88, Sayeh Street, Vali-E-Asr Street, Tehran, 19677-13869, Iran
Tel : (98)-21-2202-8947, e-mail : hanchangye@kccworld.co.kr



About us

The KCC Corporation is a family owned business founded in 1958 which employs over 4,600 people in 17 countries. The company is headquartered in Seoul, South Korea and is a global leader in coatings and speciality chemicals. KCC is a proud, relatively new entrant to the silicones industry, with functional siloxane ingredients designed to meet the ever growing global demands for safe, effective and environmentally sound technology, with a strong focus on the personal care sector.

Basildon Chemicals is a UK based specialist manufacturer and formulator of silicone emulsions and silicone compounds for the personal care sector. Established in 1971, they are renowned as a company with a history of excellence in the emulsification of silicones. In April 2011, Basildon Chemicals was purchased by the KCC Corporation and, to this day, continue their focus on the consumer markets of food, pharmaceuticals and personal care.

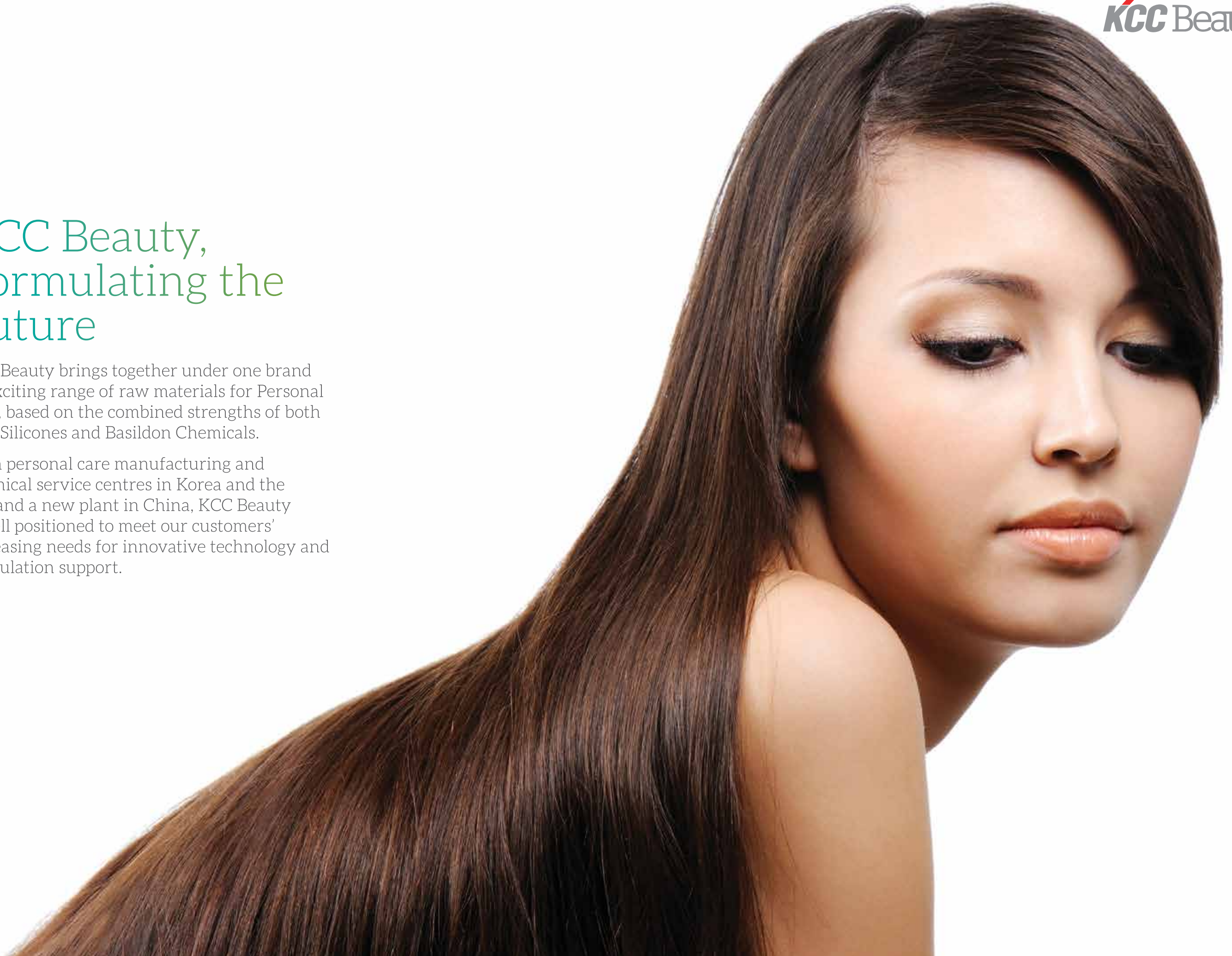
Contents

Product List	6
SeraSense®	
Volatile Silicone Fluids	8
Dimethicone Fluids	10
Gum Blends	10
Phenyl Modified Silicones	12
Amino-Functional Fluids	12
Film formers and Fixatives	14
Functional Fluids	14
SeraSol®	
Silicone Copolyols	16
SeraSoft®	
Silicone Waxes	18
SeraShine®	
Dimethicone Emulsions	20
Amino Functional Emulsions	22
Multi-Functional Emulsions	24
SeraSilk®	
Elastomer Blends	26
SeraSnow®	
Silicone Powders & Treatments	28
SeraSkin®	
Skin Adhesion Polymers	30

KCC Beauty, Formulating the Future

KCC Beauty brings together under one brand an exciting range of raw materials for Personal Care, based on the combined strengths of both KCC Silicones and Basildon Chemicals.

With personal care manufacturing and technical service centres in Korea and the UK, and a new plant in China, KCC Beauty is well positioned to meet our customers' increasing needs for innovative technology and formulation support.



SeraSense®
Dimethicone Fluids and Fluid Blends

Volatile Fluids

Product Name	INCI Name	Page 8
SeraSense SF 0.65	Disiloxane	
SeraSense SF 1	Trisiloxane	
SeraSense SF 1.5	Dimethicone	
SeraSense SF 2	Dimethicone	
SeraSense SF 1.8	Dimethicone	
SeraSense SF CM5	Cyclopentasiloxane	
SeraSense SF CM56	Cyclopentasiloxane (and) Cyclohexasiloxane	
SeraSense SF CPM-A	Caprylyl Methicone	
SeraSense SF MTM	Methyltrimethicone	

Dimethicone Fluids

Product Name	INCI Name	Page 10
SeraSense SF 5	Dimethicone	
SeraSense SF 6	Dimethicone	
SeraSense SF 10	Dimethicone	
SeraSense SF 20	Dimethicone	
SeraSense SF 50	Dimethicone	
SeraSense SF 100	Dimethicone	
SeraSense SF 200	Dimethicone	
SeraSense SF 350	Dimethicone	
SeraSense SF 500	Dimethicone	
SeraSense SF 1K	Dimethicone	
SeraSense SF 3K	Dimethicone	
SeraSense SF 5K	Dimethicone	
SeraSense SF 10K	Dimethicone	
SeraSense SF 12.5K	Dimethicone	
SeraSense SF 30K	Dimethicone	
SeraSense SF 60K	Dimethicone	
SeraSense SF 100K	Dimethicone	
SeraSense SF 500K	Dimethicone	

Gum Blends

Product Name	INCI Name	Page 10
SeraSense GB 10	Cyclopentasiloxane (and) Dimethiconol	
SeraSense GB 12	Dimethicone (and) Dimethiconol	
SeraSense GB 16	Dimethicone (and) Dimethiconol	
SeraSense GB 17	Dimethicone (and) Dimethiconol	
SeraSense GB 11	Cyclopentasiloxane (and) Dimethicone	
SeraSense GB 14	Cyclopentasiloxane (and) Dimethicone	
SeraSense GB 24	Cyclopentasiloxane (and) Dimethicone	
SeraSense GB 36	Dimethicone	

Phenyl Modified Silicones

Product Name	INCI Name	Page 12
SeraSense SF DDM	Diphenyl Dimethicone	
SeraSense SF DDM 10K	Diphenyl Dimethicone	
SeraSense SF PTM	Phenyl Trimethicone	

Amino-Functional Fluids

Product Name	INCI Name	Page 12
SeraSense SA 30	Amodimethicone	
SeraSense SA 32	Aminopropyl Dimethicone	
SeraSense SA 33	Amodimethicone	

Film formers & Fixatives

Product Name	INCI Name	Page 14
SeraSense AC 15	Acrylates / Dimethicone Copolymer (and) Cyclopentasiloxane	
SeraSense AC 16	Acrylates / Dimethicone copolymer (and) Dimethicone	
SeraSense AC 17	Acrylates / Dimethicone copolymer (and) Phenyltrimethicone	
SeraSense AC 18	Acrylates / Dimethicone copolymer (and) Dimethicone	
SeraSense AC 14	Acrylates / Dimethicone copolymer (and) Dimethicone	
SeraSense AC 19	Acrylates / Dimethicone copolymer (and) Isododecane	
SeraSense ACA 10	Acrylates / Dimethicone copolymer (and) Undecane (and) Tridecane	
SeraSense AC 29	Acrylates / Dimethicone copolymer (and) Isododecane	
SeraSense RB 21	Dimethicone (and) Trimethylsiloxysilicate	
SeraSense RB 22	Cyclopentasiloxane (and) Trimethylsiloxysilicate	
SeraSense RB 23	Dimethicone (and) Trimethylsiloxysilicate	
SeraSense RB 24	Dimethicone (and) Trimethylsiloxysilicate	
SeraSense RBA 25	Undecane (and) Tridecane (and) Trimethylsiloxysilicate	
SeraSense AW 61	Acrylates/ Stearyl acrylate/ Dimethicone Methacrylate Copolymer	

Functional Fluids

Product Name	INCI Name	Page 14
SeraSense CF 50	Bis hydroxyethoxypropyl Dimethicone	
SeraSense CF 51	Bis hydroxyethoxypropyl Dimethicone	

SeraSol®
Water soluble polymers and emulsifiers

Silicone Copolyols

Product Name	INCI Name	Page 16
SeraSol SC 80	PEG / PPG-18 / 18 Dimethicone	
SeraSol SC 81	PEG-12 Dimethicone	
SeraSol SC 83T	Cetyl PEG/PPG-10/1 Dimethicone	
SeraSol SC 95	Lauryl PEG-8 Dimethicone	
SeraSol SC 85	PEG-11 Methyl Ether Dimethicone	
SeraSol SC 86T	PEG-10 Dimethicone	
SeraSol EL 92A	Dimethicone (and) Dimethicone / PEG-10 / 15 Crosspolymer	
SeraSol EL 96	Cyclopentasiloxane (and) Dimethicone/PEG-10 / 15 Crosspolymer	
SeraSol EL 98	Isohexadecane (and) PEG-15 / Lauryl Dimethicone Crosspolymer	
SeraSol EL 99	Dimethicone (and) PEG-15 / Lauryl Dimethicone Crosspolymer	

SeraSoft®
Soft solid and liquid Silicone waxes

Silicone Waxes

Product Name	INCI Name	Page 18
SeraSoft SW 70-A	Stearyl Dimethicone (and) Octadecene	
SeraSoft SW 71-A	Cetyl Dimethicone	
SeraSoft SW 73	C20-24 Alkyl Dimethicone	
SeraSoft SW 75	Bis-PEG-18 Methyl Ether Dimethyl Silane	

SeraShine®
Silicone Emulsions

Dimethicone Emulsions

Product Name	INCI Name	Page 20
SeraShine EM 102	Dimethicone (and) Laureth-23 (and) Laureth-3	
SeraShine EM 103	Dimethicone (and) Laureth-23 (and) Laureth-3	
SeraShine EM 103R	Dimethicone (and) Laureth-23 (and) Laureth-3	
SeraShine EM 104	Dimethicone (and) Laureth-23 (and) Laureth-3	
SeraShine EM 104R	Dimethicone (and) Laureth-23 (and) Laureth-3	
SeraShine EM 106	Dimethicone (and) Laureth-23 (and) Laureth-3	
SeraShine EM 108	Dimethicone (and) Laureth-23 (and) Laureth-3	
SeraShine EM 108R	Dimethicone (and) Laureth-23 (and) Laureth-3	
SeraShine EM 125	Dimethicone (and) Laureth-23 (and) Laureth-3	
SeraShine EM 127	Dimethicone (and) Laureth-23 (and) Laureth-3	
SeraShine EM 129	Dimethicone (and) Laureth-23 (and) Laureth-4	
SeraShine EM 201-A	Dimethiconol (and) TEA-Dodecylbenzenesulfonate	
SeraShine EM 222	Dimethiconol (and) C11-15 Pareth-12 (and) Sodium Dodecylbenzenesulfonate	
SeraShine EM 203-A	Dimethiconol (and) TEA-Dodecylbenzenesulfonate	
SeraShine EM 205-A	Dimethiconol (and) TEA-Dodecylbenzenesulfonate	
SeraShine EM 208-A	Dimethiconol (and) TEA-Dodecylbenzenesulfonate	

Amino Functional Emulsions

Product Name	INCI Name	Page 22
SeraShine EM 301-A	Amodimethicone (and) Trideceth-12 (and) Cetrimonium Chloride	
SeraShine EM 305C	Amodimethicone (and) C12-14 sec-Pareth-7	
SeraShine EM 305CR	Amodimethicone (and) C12-14 sec-Pareth-7	
SeraShine EM 306	Amodimethicone (and) Laureth-23 (and) Laureth-6	
SeraShine EM 308	Amodimethicone (and) Steartrimonium chloride	
SeraShine EM 505	Amodimethicone (and) Dimethicone (and) Laureth-23 (and) Laureth-6	
SeraShine EM 512	Dimethicone (and) Amodimethicone (and) Laureth-23 (and) Polyquaternium-10 (and) Laureth-4	

Multi-Functional Emulsions

Product Name	INCI Name	Page 24
SeraShine EM 503	Dimethicone (and) Cocamidopropyl Betaine (and) Trideceth-7 (and) Guar Hydroxypropyltrimonium Chloride	
SeraShine EM 504	Dimethicone (and) Cocamidopropyl Betaine (and) Laureth-3 (and) Guar Hydroxypropyltrimonium Chloride	
SeraShine EM 509	Dimethicone (and) Trimethylsiloxysilicate (and) Poloxamer188 (and) Poloxamer 388 (and) 1,2-hexanediol	
SeraShine EM 510	Dimethiconol (and) Decyl glucoside (and) Glycerine (and) 1,2-Hexanediol (and) Carbomer	
SeraSilk EM 602	Dimethicone / Vinyl Dimethicone Crosspolymer (and) C12-14 sec-Pareth-7	
SeraSilk EM 607	Cyclopentasiloxane (and) Dimethicone / Vinyl Dimethicone Crosspolymer (and) Laureth-4 (and) Laureth-23 (and) 1,2-hexandiol	
SeraSilk EM 608	Dimethicone (and) Dimethicone / Vinyl Dimethicone Crosspolymer (and) Laureth-4 (and) Laureth-23 (and) 1,2-hexandiol	
SeraSilk EM 605	Dimethicone (and) Water (and) Glycerin (and) Butylene glycol (and) Glycereth-20 (and) Pentylene glycol (and) Dimethicone / Vinyl Dimethicone Crosspolymer (and) Phenoxyethanol (and) Carbomer (and) Amodimethicone (and) Sodium Hydroxide (and) Disodium EDTA	
SeraSoft EM 703	Stearyl Dimethicone (and) Octadecene (and) Laureth-23 (and) Laureth-3	

SeraSilk®
Silicone Elastomer Blends

Silicone Elastomer Blends

Product Name	INCI Name	Page 26
SeraSilk EL 60	Cyclopentasiloxane (and) Dimethicone / Vinyl Dimethicone Crosspolymer	
SeraSilk EL 61	Dimethicone (and) Dimethicone / Vinyl Dimethicone Crosspolymer	
SeraSilk EL 63	Cyclopentasiloxane (and) Dimethicone / Vinyl Dimethicone Crosspolymer	
SeraSilk EL 64	Dimethicone (and) Dimethicone / Vinyl Dimethicone Crosspolymer	
SeraSilk EL 65	Dimethicone (and) Dimethicone / Vinyl Dimethicone Crosspolymer	
SeraSilk EL 66	Dimethicone (and) Dimethicone / Vinyl Dimethicone Crosspolymer	
SeraSilk EL 74	Dimethicone (and) Cyclopentasiloxane (and) Dimethicone / Vinyl Dimethicone Crosspolymer	
SeraSilk EL 75	Dimethicone (and) Dimethicone / Vinyl dimethicone Crosspolymer	
SeraSilk EL 78	Dimethicone (and) Dimethicone / Vinyl Dimethicone Crosspolymer	
SeraSilk EL 81	Isododecane (and) Dimethiconol (and) Dimethicone/ Vinyl Dimethicone Crosspolymer	
SeraSilk EL 84	Cyclopentasiloxane (and) Dimethicone / Vinyl Dimethicone Crosspolymer	
SeraSilk EL 86	Methyl Trimethicone (and) Dimethicone / Vinyl Dimethicone Crosspolymer	
SeraSilk EL 10	Dimethicone (and) Dimethicone Crosspolymer	
SeraSilk AM 76	Cyclopentasiloxane (and) Cetearyl Dimethicone / Vinyl Dimethicone Crosspolymer	
SeraSilk AM 80	Dimethicone (and) Cetearyl Dimethicone / Vinyl Dimethicone Crosspolymer	
SeraSilk PD 69	Cyclopentasiloxane (and) Cyclohexasiloxane (and) Dimethicone / Vinyl dimethicone Crosspolymer	
SeraSilk PD 71	Cyclopentasiloxane (and) Dimethicone / Vinyl Dimethicone Crosspolymer	
SeraSilk PD 72	Dimethicone (and) Dimethicone / Vinyl dimethicone Crosspolymer	
SeraSilk PD 82	Dimethiconol (and) Trisiloxane (and) Dimethicone / Vinyl Dimethicone Crosspolymer	

SeraSnow®
Elastomer powders and pigment treatments

Elastomer Powders and Treatments

Product Name	INCI Name	Page 28
SeraSnow SF 10	Methicone	
SeraSnow SF 11	Dimethicone / Methicone Copolymer	
SeraSnow SP 13	Dimethicone / Vinyl dimethicone Crosspolymer	
SeraSnow SP 14	Vinyl Dimethicone / Methicone Silsesquioxane Crosspolymer	

SeraSkin®
Clear gel film-forming silicones

Skin Adhesion Polymers

Product Name	INCI Name	Page 30
SeraSkin RS 10A	Bis-Vinyl Dimethicone	
SeraSkin RS 10B	Vinyl Dimethicone (and) Hydrogen Dimethicone	

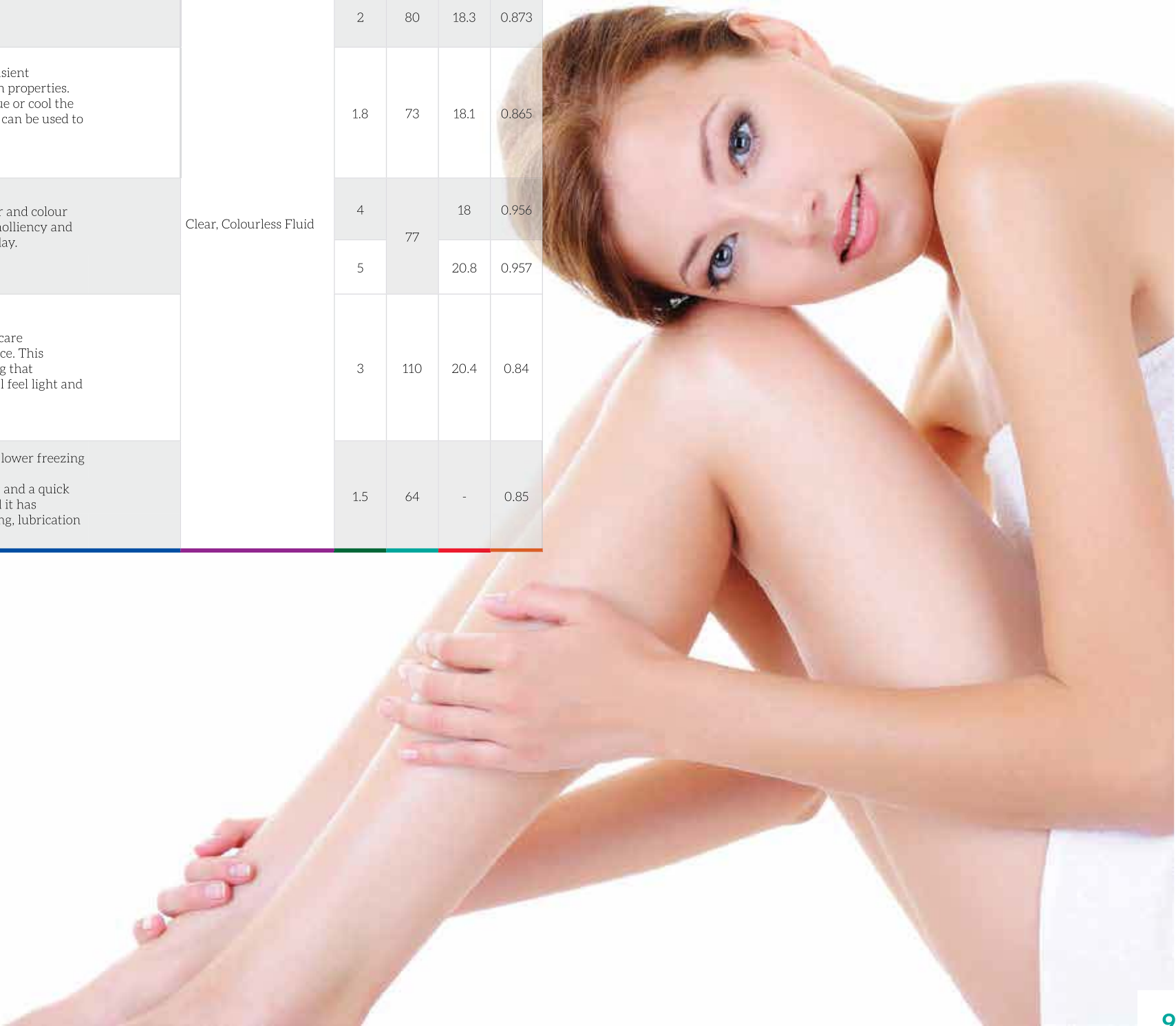
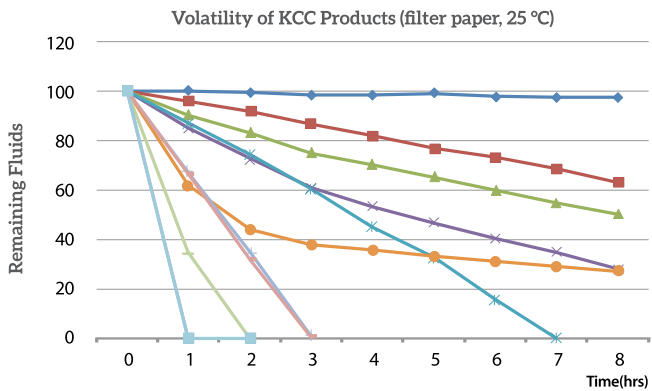
SeraSense®
A comprehensive range of tantalising
sensory focused silicone emollients
and conditioners for skin and hair care
products.



Volatile Silicone Fluids

Volatile Silicone Fluids

Product Name	INCI Name	Benefits	Characteristics	Appearance	Viscosity (cS at 25°C)	Flash Point (°C)	Surface Tension (mN/m)	Specific Gravity (at 25°C)
SeraSense SF 0.65	Disiloxane	<ul style="list-style-type: none"> Excellent spread quality Very fast vaporisation Non-VOC cosmetic solvent 	The shortest chained dimethicone polymer available for fast evaporation with a non-cooling effect. A good cosmetic solvent	Clear, Colourless Fluid	0.65	-3.3	15.9	0.76
SeraSense SF 1	Trisiloxane		Recommended usage level 1.0-90.0		1	30	16.9	0.818
SeraSense SF 1.5		<ul style="list-style-type: none"> Soft and silky skin feel Excellent spread quality Non-VOC cosmetic solvent Non-flammable Non skin cooling vaporisation 	Short straight chained dimethicones that have close evaporation profiles to that of D5 with all the versatility and benefits that D5 offer but from a different silicone technology.		1.5	63	17.7	0.852
SeraSense SF 2			Recommended usage level 1.0-90.0		2	80	18.3	0.873
SeraSense SF 1.8	Dimethicone	<ul style="list-style-type: none"> Excellent spreading No oily residue Dry non-greasy feel Improves wet combing Compatible with many organic materials, solvents Low surface tension and viscosity 	Volatile methylsiloxane fluid and has a linear structure with transient emollients or carriers with excellent spread ability and lubrication properties. When volatile silicone fluids evaporate, they do not leave a residue or cool the skin. By using blends of dimethicones this difference in volatility can be used to vary the residence time of the silicone on the skin.		1.8	73	18.1	0.865
SeraSense SF CM5	Cyclopentasiloxane	<ul style="list-style-type: none"> Soft and silky skin feel Excellent spread quality Non-VOC cosmetic solvent Non-flammable Non skin cooling vaporisation 	Cyclic volatile silicone fluids for use in a wide variety of skin, hair and colour personal care applications. Excellent skin feel with a transient emolliency and are deemed to be the most important cosmetic solvents in use today.		4	77	18	0.956
SeraSense SF CM56	Cyclopentasiloxane (and) Cyclohexasiloxane		Recommended usage level 0.5-90.0		5		20.8	0.957
SeraSense SF CPM-A	Caprylyl Methicone	<ul style="list-style-type: none"> Replace D5 (Less dry than more volatile materials) Excellent compatibility with a wide range of ingredients Improved pigment dispersibility Easy to formulate Superior cleansing effect Can be heated up to 90 °C Possible to make transparent formulations 	An alkyl modified siloxane for use in various skin, colour and lip care formulations to improve smoothness, detakification and emollience. This polymer is also very compatible with organic ingredients meaning that formulations containing natural materials can be created that still feel light and silky.		3	110	20.4	0.84
SeraSense SF MTM	Methyltrimethicone	<ul style="list-style-type: none"> Replace D5 (better volatile & has lower freezing point) Unique sensory feel Excellent compatibility No irritation Odorless, ultra high purity 	This branched type volatile silicone fluid has faster volatility and lower freezing point than D5. This unique sensory feel product provides improved skin wetting and a quick flash-off that leaves a dry, silky feel on skin with no buildup. And it has excellent emolliency and aesthetic carriers with superior spreading, lubrication and transient conditioning.		1.5	64	-	0.85



Dimethicone Fluids

Dimethicone Fluids

Product Name	INCI Name	Benefits	Characteristics	Appearance	Viscosity (cS at 25°C)	Flash Point (°C)	
SeraSense SF 5	Dimethicone	<ul style="list-style-type: none">Excellent spreadNon-tacky emollientLow surface tensionSkin lubricity	Low viscosity dimethicones spread extremely well to create a non-sticky moisture barrier for use in elegant skin protective creams and lotions. Can eliminate the whitening or ‘soaping’ effect seen in W/O emulsions. Soluble in alcohols.	Clear, Colourless Fluid	5	>90	
SeraSense SF 6					6	>150	
SeraSense SF 10					10	>160	
SeraSense SF 20					20	>200	
SeraSense SF 50					50	>300	
SeraSense SF 100					100	>315	
SeraSense SF 200		<ul style="list-style-type: none">Good spreadNon-tacky emollientLow surface tensionSkin lubricity	Low-medium viscoisty dimethicones offer greater substantivity than those of a lower viscosity and spread almost as well. Good emollient properties and can eliminate the whitening or ‘soaping’ effect seen in W/O emulsions.		200		
SeraSense SF 350					350		
SeraSense SF 500					500		
SeraSense SF 1K					1,000		
SeraSense SF 3K		<ul style="list-style-type: none">Clear- Essentially nontoxicNon bioaccumulatingNon bioactiveNon greasyNon occlusiveNon rancidifyingNon stinging on skin	Medium viscosity polydimethylsiloxane polymers manufactured to yield essentially linear polymers with average kinematic viscosities ranging from 1,000 to 10,000cSt.		3,000		
SeraSense SF 5K					5,000		
SeraSense SF 10K					10,000		
SeraSense SF 12.5K					12,500		
SeraSense SF 30K		<ul style="list-style-type: none">Skin protectionImparts soft velvety skin feelSpreads easily on both skin and hairDe-soaping (prevents foaming during rubout)	High-viscosity polydimethylsiloxane polymer for use in personal care applications. The highmolecular-weight dimethicone provides easy combing and detangling for wet or dry hair, and adds softness, smoothness and gloss.		30,000		
SeraSense SF 60K					60,000		
SeraSense SF 100K					100,000		
SeraSense SF 500K					500,000		

Gum Blends

Gum Blends

Product Name	INCI Name	Benefits	Characteristics	Appearance	Viscosity (cS at 25°C)	Gum Content (%)	Flash Point (°C)
SeraSense GB 10	Cyclopentasiloxane (and) Dimethiconol	<ul style="list-style-type: none">Soft, silky skin feelExcellent spread of emollientLong-lasting conditioning	Blends of approximately 12~20 of an ultra-high viscosity Dimethiconol in low viscosity diluents.	Clear, Colourless Viscous Fluid	6,000	15	>80
SeraSense GB 12	Dimethicone (and) Dimethiconol				6,500	20	>135
SeraSense GB 16					3,200	14	
SeraSense GB 17					1,500	12	>105
SeraSense GB 11	Cyclopentasiloxane (and) Dimethicone		Blends of approximately 15 and 23 of an ultra-high viscosity Dimethicone in low viscosity diluents.		6,000	15	>80
SeraSense GB 14					105,000	23	
SeraSense GB 24					Blends of approximately 40 of an ultra-high viscosity Dimethicone in low viscosity diluents.	9,500	
SeraSense GB 36	Dimethicone		Blends of approximately 8 of an ultra-high viscosity Dimethicone in diluents.		2,500	8	>300



Phenyl Modified Silicones

Product Name	INCI Name	Benefits	Characteristics	Appearance	Viscosity (cS at 25°C)	Refractive Index (at 25°C)	Flash Point (°C)
SeraSense SF DDM	Diphenyl Dimethicone	<ul style="list-style-type: none">High glossImproves spreadUnique soft feel (even compared with other silicones)	This phenyl modified compound has a higher refractive index than standard phenyl silicones, leading to benchmark beating gloss in formulations. Improves spread and slip. Good organic compatability. Addition levels vary depending on desired gloss.	Clear to Slightly Hazy, Colourless Fluid	400	1.505	>300
SeraSense SF DDM 10K			This phenyl modified compound is a high shine di-phenyl modified silicone for use in skin care, sun care, antiperspirants and hair care formulations. Due to the high refractive index of this ingredient, this product creates a high degree of shine, making it perfect for inclusion into hair care products.		10,000	1.430	
SeraSense SF PTM	Phenyl Trimethicone		Effective shine enhancing agent. Improves spread and slip in hair and skin care formulations. Good organic compatability. Non-tacky feel, ideal for use in sun care products. Recommended usage level 0.5-5		25	1.460	>101

Amino-Functional Fluids

Product Name	INCI Name	Benefits	Characteristics	Appearance	Viscosity (cS at 25°C)	Flash Point (°C)	Amine contents (wt%)
SeraSense SA 30	Amodimethicone	<ul style="list-style-type: none">Improved combabilityColour protectionCuticle protection	Amino modified silicones for use in various leave on and rinse conditioners and serums for coloured or dry damaged hair. Excellent conditioning properties with improved wet and dry combability and a soft dry hair feel. Recommended usage level 0.5-3	Clear - Slightly Hazy Fluid	2,000		1.00
SeraSense SA 32	Aminopropyl Dimethicone	<ul style="list-style-type: none">Improved combabilityColour protectionEasy to handle		Clear colourless liquid	300	> 100	0.30
SeraSense SA 33	Amodimethicone	<ul style="list-style-type: none">Improved combabilityColour protectionCuticle protection		Transparent yellow liquid	5,000		0.7

Film formers & Fixatives

Continued...

Film formers & Fixatives

Product Name	INCI Name	Benefits	Characteristics	Appearance	Viscosity (cS at 25°C)	Active Content(%)	Base Oil
SeraSense AC 15	Acrylates / Dimethicone Copolymer (and) Cyclopentasiloxane	<ul style="list-style-type: none">Soft flexible film formerWater resistant effectGood compatibility & dispersion stability	Graft copolymer with an acrylic polymer backbone and dimethylpolysiloxane side chain. They combines the benefits of acrylic resins with silicones. They are useful ingredients giving long lasting properties. Shows excellent water and oil repellency, wash off resistance and act as soft flexible film former.	Colourless to lightly yellow, Transpatent to slightly haze	200	30	Cyclopentasiloxane
SeraSense AC 16	Acrylates / Dimethicone Copolymer (and) Dimethicone				30		2cS Dimethicone Fluid
SeraSense AC 17	Acrylates / Dimethicone copolymer (and) Phenyltrimethicone				30,000	40	Phenyltrimethicone
SeraSense AC 18	Acrylates / Dimethicone copolymer (and) Dimethicone				200	25	5cS Dimethicone fluid
SeraSense AC 14					5,000	40	1.5cS Dimethicone Fluid
SeraSense AC 19	Acrylates / Dimethicone copolymer (and) Isododecane				500		Isododecane
SeraSense ACA 10	Acrylates / Dimethicone copolymer (and) Undecane (and) Tridecane	<ul style="list-style-type: none">Hard film formerWater resistant effectGood compatibility & dispersion stability	Graft copolymer with an acrylic polymer backbone and dimethylpolysiloxane side chain. They combines the benefits of acrylic resins with silicones. They are useful ingredients giving long lasting properties. Shows excellent water and oil repellency, wash off resistance and act as hard type film former.		700	40	Undecane & Tridecane
SeraSense AC 29	Acrylates / Dimethicone copolymer (and) Isododecane				200	Isododecane	
SeraSense RB 21	Dimethicone (and) Trimethylsiloxysilicate	<ul style="list-style-type: none">Pigment adhesion promotorWash-off resistanceSoft skin feelAnti-frizz agent	This silicone resin in fluid blend offers good pigment adhesion with a matt finish for use in colour cosmetics. For hair care applications, this ingredient is easily incorporated into protective serums where its anti-frizz properties are truly impressive. Recommended usage level 0.5-3	800	33	100cS Dimethicone Fluid	
SeraSense RB 22	Cyclopentasiloxane (and) Trimethylsiloxysilicate			500	50	Cyclopentasiloxane	
SeraSense RB 23	Dimethicone (and) Trimethylsiloxysilicate			700	65	2cS Dimethicone Fluid	
SeraSense RB 24				500	70	1.5cS Dimethicone Fluid	
SeraSense RBA 25	Undecane (and) Tridecane (and) Trimethylsiloxysilicate			450		Undecane & Tridecane	
SeraSense AW 61	Acrylates / Stearyl acrylate / Dimethicone Methacrylate Copolymer	<ul style="list-style-type: none">Wax type mild film formerExcellent gloss persistenceExcellent adhesion	Graft copolymer with an acrylic polymer backbone and dimethylpolysiloxane side chain. They combines the benefits of acrylic resins with silicones. They are useful ingredients giving long lasting properties. Shows excellent water and oil repellency, wash off resistance and act as mild film former and shows good adhesion and gloss.	White to light yellow wax	Mp. 30	100	-

Functional Fluids

Product Name	INCI Name	Benefits	Characteristics	Appearance	Viscosity (cS at 25°C)
SeraSense CF 50	Bis hydroxyethoxypropyl Dimethicone	<ul style="list-style-type: none">Enhances SPF in sun care formulationsWide range of compatibilities with both polar and non-polar solventsSmoother, less tacky and more substantive than linear siliconesEnhanced binder properties in powderStable in acid/base conditions	Carbinol structure is slightly different than commercial products. General appearance is same. This product offer Improving pigment and active processing and suspension, Enhancing SPF in sun care applications	Colourless - light amber Fluid	60
SeraSense CF 51					450

SeraSol®
Gentle water soluble polymers and emulsifiers for the
creation of elegant emulsions or fantastically rich
luxurious bathing products.



Silicone Copolyols

Silicone Copolyols

Product Name	INCI Name	Benefits	Characteristics	Appearance	Viscosity (cS at 25°C)	HLB	Gel content(%)	Base Oil
SeraSol SC 80	PEG/PPG-18/18 Dimethicone	<ul style="list-style-type: none">• Cold processable• Non-ionic W/Si emulsifier• W/O co-emulsifier• Humectant	A light and silky PEG and PPG modified silicone for use as a surface tension depressant, or silicone emulsifier in a wide range of skin care and clear hair care applications. Good wet conditioner for shaving, bathing and shower products. Recommended usage level 0.5-3	Clear to slightly hazy liquid	2,000	4.5		
SeraSol SC 81	PEG-12 Dimethicone	<ul style="list-style-type: none">• Pro-foamer• Si/W emulsifier• Cold processable• Wetting agent	A light and silky water soluble PEG modified silicone for use in a wide range of skin care and hair care applications. Good foam booster and wet conditioner for shaving, bathing and shower products. Recommended usage level 1.5-5.0	Clear to slightly hazy, light amber fluid	250~450	13		
SeraSol SC 83T	Cetyl PEG/PPG-10/1 Dimethicone	<ul style="list-style-type: none">• Cold processable• Non-ionic W/O or W/Si emulsifier• W/O/W emulsions possible• Excellent key emulsion stabiliser• Light unique silky emulsions created	Unique silicone emulsifiers for skin creams, lotions and foundations. The copolyol acts as the hydrophile whilst the alkyl modification offers the hydrophobic tail, with the silicone acting as the sandwiching layer that offers a pleasant light and silky feel to the W/O or W/Si emulsion. Compatible with high levels of organic ingredients. Generates excellent freeze / thaw stability. Recommended usage level 0.5-3.0	Clear, colourless to yellow fluid	1,500	< 5		
SeraSol SC 95	Lauryl PEG-8 Dimethicone	<ul style="list-style-type: none">• W/O or W/Si emulsifier• Good compatibility with silicones and organic oils• Low viscosity emulsions can be achieved with cold process• High pigment and powder dispersion performance	W/O or W/Si silicone emulsifier can make stable emulsions with low viscosity and pleasant sensory feel. The alkyl functionality contributes to high compatibility with silicone and organic oils, and the PEG hydrophilic group helps enhance pigment dispersion performance to give improved color intensity of foundations. Recommended usage level 1.0-5.0	Clear to slightly hazy, colourless to light yellow fluid	850	3		
SeraSol SC 85	PEG-11 Methyl Ether Dimethicone	<ul style="list-style-type: none">• Pro-foamer• Si/W emulsifier, O/W co-emulsifier• Cold processable• Wet-conditioning agent• Humectant	Silicone glycol copolymer soluble in water. This silky soft PEG modified silicone offers excellent wet conditioning whilst creating gloss and reducing static in skin and hair Recommended usage level 0.5-5		120	12		
SeraSol SC 86T	PEG-10 Dimethicone	<ul style="list-style-type: none">• Silicone emulsifier• Formulation flexibility with a broad range of silicone and organic oil phases• Low viscosity emulsions can be achieved• Ease of use• Cold or hot processing	A light and silky PEG modified silicone for use as a surface tension depressant, or emulsifier in a wide range of colour cosmetic, skin care and clear hair care applications. Good wet conditioner for shaving and hair care products. Recommended usage level 0.5-3	Clear, colourless fluid	700	< 4		
SeraSol EL 92A	Dimethicone (and) Dimethicone / PEG-10 / 15 Crosspolymer	<ul style="list-style-type: none">• Silicone swellable elastomeric emulsifier• Light non-greasy silicone elastomer feel• Highly stable W/Si emulsifier• Cold processable• Unique skin feel• Can form transparent serums	A PEG modified self-emulsifying crosslinked silicone elastomer for the creation of truly unique W/Si emulsions. It can be used in a variety of skin care, colour cosmetics and sun care applications. Recommended usage level 1.0-5.0		150,000	-	29	6cS Dimethicone Fluid
SeraSol EL 96	Cyclopentasiloxane (and) Dimethicone/ PEG-10/15 Crosspolymer			Translucent Paste	60,000	-	17	Cyclopentasiloxane
SeraSol EL 98	Isohexadecane (and) PEG 15 / Lauryl Dimethicone Crosspolymer	<ul style="list-style-type: none">• Excellent compatibility with organic oil• Emulsifying silicone gel• Cold processable• Light non-greasy and silky skin feel- elastomeric feel	PEG, Alkyl modified self-emulsifying crosslinked silicone elastomer. It can be used in a variety of skin care products, colour cosmetics and sun care applications. Recommended usage level 1.0-5.0		65,000	-	24	Isohexadecane
SeraSol EL 99	Dimethicone (and) PEG-15 / Lauryl Dimethicone Crosspolymer				90,000	-	30	2cS Dimethicone fluid

SeraSoft®
A versatile range of soft silicone waxes to offer the gentle care a sun, skin or lip care product needs, without greasy after effects.



Silicone Waxes

Product Name	INCI Name	Benefits	Characteristics	Appearance	Melting point (°C)
SeraSoft SW 70-A	Stearyl Dimethicone (and) Octadecene	<ul style="list-style-type: none">Enhances glossPromotes lubricityWater-barrier for the skinSPF boosterDetackifier in creams and lotionsRheology ModifierHigh melting point(similar body temperature)Forming solid product	A soft wax alkylated silicone. The stearyl (C18)modification makes this type of silicone more compatible with organic ingredients. Melts luxuriously onto the skin at 32°C. Ideal for use in sun and lip care products due to its high refractive index, low tack, and potential pigment spreading abilites. Recommended usage level 0.5-10	White to slightly yellow wax	32
SeraSoft SW 71-A	Cetyl Dimethicone	<ul style="list-style-type: none">Enhances glossPromotes lubricityWater-barrier for the skinSPF boosterDetackifier in creams and lotionsIncrease Viscosity	A liquid alkylated silicone. The cetyl(C16) modification makes this type of silicone more compatible with organic ingredients. Ideal for use in sun care products due to it's potential active spreading abilities. Recommended usage level 0.5-10	Colourless to yellow clear liquid	18
SeraSoft SW 73	C20-24 Alkyl Dimethicone	<ul style="list-style-type: none">Improves smoothnessEmollient propertiesDetackifier in creams and lotionsAids water repellency	A medium-soft silicone wax. The alkyl modification makes this type of silicone more compatible with organic ingredients. Melts luxuriously onto the skin. Ideal for use in sun and lip care products. Recommended usage level 0.5-10	Hard, colourless to yellow solid	40
SeraSoft SW 75	Bis-PEG-18 Methyl Ether Dimethyl Silane	<ul style="list-style-type: none">Water solubleMoisturizing film formingMelts on contact with skinLeaves skin feeling smooth and softDetackifier in creams and lotionsImproves foam quality	A water dispersible silicone glycol copolymer wax for use in various skin care and foaming applications due to its qualities as a rich pro-foamer and humectant. Melts onto skin. Recommended usage level 0.5-10	White to slightly yellow wax	37



Dimethicone Emulsions

Dimethicone Emulsions

Product Name	INCI Name	Benefits	Characteristics	Appearance	Internal Viscosity (cS at 25°C)	Emulsion viscosity (cS at 25°C)	Silicone contents (wt%)	Particle Size (µm)	Emulsifier Type
SeraShine EM 102	Dimethicone (and) Laureth-23 (and) Laureth-3	<ul style="list-style-type: none">Reduced combing time on wet and dry hairConditioning agentLeaves hair feeling softImparts high gloss	A non-ionic emulsion of a blend of ultra-high molecular weight polydimethylsiloxane gum and intermediate molecular weight polydimethylsiloxane fluid specifically designed for use in personal care products. This Silicone gum emulsion provides strong conditioning performance. Recommended usage level 2-5		1 million	4,000~8,000	60	10~30	Non-ionic
SeraShine EM 103					300,000				
SeraShine EM 103R					60,000			2,000~4,000	
SeraShine EM 104									
SeraShine EM 104R									
SeraShine EM 106			A non-ionic emulsion of a blend of ultra-high molecular weight polydimethylsiloxane gum and intermediate molecular weight polydimethylsiloxane fluid with high particle size specifically designed for use in personal care products. This Silicone gum emulsion provides strong conditioning performance. Recommended usage level 2-5	Milky white liquid	500,000	2,000~10,000	40	20~40	
SeraShine EM 108			A non-ionic emulsion of a blend of ultra-high molecular weight polydimethylsiloxane gum and intermediate molecular weight polydimethylsiloxane fluid specifically designed for use in personal care products. This Silicone gum emulsion provides strong conditioning performance. Recommended usage level 2-5		600,000	4,000~8,000	60	10~30	
SeraShine EM 108R			A non-ionic emulsion of a high molecular weight polydimethylsiloxane fluid with a medium particle size specifically designed for use in personal care products. This product provides strong conditioning performance. Recommended usage level 2-5		500,000	7,000~15,000			
SeraShine EM 125					60,000	3,000~8,000	70	1~10	
SeraShine EM 127									
SeraShine EM 129	Dimethicone (and) Laureth-23 (and) Laureth-4		A non-ionic emulsion of a blend of ultra-high molecular weight polydimethylsiloxane gum and intermediate molecular weight polydimethylsiloxane fluid specifically designed for use in personal care products. This Silicone gum emulsion provides strong conditioning performance. Recommended usage level 2-5		200,000	2,000~10,000	60	0.1~5	
SeraShine EM 201-A	Dimethiconol (and) TEA-Dodecylbenzenesulfonate	<ul style="list-style-type: none">Ideal conditioning for all hair typesImproves wet combingGives a soft feel to hair and skinEnhances shineFoam is not adversely affected	An anionic emulsion of very high viscosity polydimethylsiloxane. Designed for frequent use. Recommended usage level 0.5-5 depending on conditioning required and hair type	White, mobile emulsion.	60,000	1~1,000	50	0.3~0.7	Anionic
SeraShine EM 222	Dimethiconol (and) C11-15 Pareth-12 (and) Sodium Dodecylbenzenesulfonate			Off - white viscous emulsion	1 million	150		0.2	
SeraShine EM 203-A				Milky white liquid		1~1,000	60	0.2~1	
SeraShine EM 205-A	Dimethiconol (and) TEA-Dodecylbenzenesulfonate	<ul style="list-style-type: none">Designed for coarse hair typesIntense conditioningImproves wet combingGives a soft feel to hair and skinEnhances shineFoam is not adversely affected	An anionic emulsion of a high viscosity poldimethylsiloxane with a large particle size for enhanced deposition and intense conditioning. Specially designed for coarse African and Asian hair types. Recommended usage level 2-6	Milky white liquid	500,000	3,000~10,000	60	5~12	
SeraShine EM 208-A			<ul style="list-style-type: none">Designed for fine hair typesImproves wet combingGives a soft feel to hair and skinEnhances shineFoam is not adversely affected	An anionic emulsion of very high viscosity polydimethylsiloxane. Combination of high internal viscosity and fine particle size means this emulsion is ideal for for fine hair types. Designed for frequent use. Recommended usage level 0.5-5 depending on conditioning required	Milky white liquid	>1 million	1~1,000	50	

Amino Functional Emulsions

Amino Functional Emulsions

Product Name	INCI Name	Benefits	Characteristics	Appearance	Internal Viscosity (cS at 25°C)	Emulsion viscosity (cS at 25°C)	Silicone contents (wt%)	Particle Size (µm)	Emulsifier Type	Amine contents (wt%)
SeraShine EM 301-A	Amodimethicone (and) Trideceth-12 (and) Cetrimonium Chloride	<ul style="list-style-type: none">Highly substantive to hairImproves wet and dry combingOffers colour protectionExcellent detangling	A cationic macro emulsion of an amino functional silicone polymer for use in a range of hair care formulations including shampoos, conditioners, styling aids and hair colourants Recommended usage level 1-5	Milky white	5,000	1~100	35	<0.3	Cationic	0.07
SeraShine EM 305C	Amodimethicone (and) C12-14 sec-Pareth-7	<ul style="list-style-type: none">Micro emulsionReduced combing time on wet and dry hairConditioning agentImparts high gloss - Leaves hair feeling soft	A non-ionic micro emulsion has an average particle size of 30 nanometers. This product is micro emulsion of amino-modified silicone polysiloxane fluid specifically designed to be used in aqueous based conditioning products for damaged hair. Recommended usage level 1-4	Clear to slightly hazy liquid	1,000	<500	23	< 0.1	Non-ionic	0.2
SeraShine EM 305CR										
SeraShine EM 306	Amodimethicone (and) Laureth-23 (and) Laureth-6	<ul style="list-style-type: none">Reduced combing time on wet and dry hairConditioning agentImparts high gloss - Leaves hair feeling softLow yellowish	A non-ionic macro emulsion of an amino-modified silicone polysiloxane fluid for use in a range of hair care formulations including shampoos, conditioners, styling aids. Recommended usage level 2-5	Milky white liquid	80,000		40	< 1		0.04
SeraShine EM 308	Amodimethicone (and) Steartrimonium chloride	<ul style="list-style-type: none">High quality conditioningImproves wet and dry combingSubstantive to damaged hairOffers colour protection	A cationic macro emulsion of an amino functional silicone polymer. It is specifically designed to be used in aqueous based conditioning products for damaged hair. It can be used in combination with other dimethicone emulsions. Recommended usage level 1-5		5,000	1,000 ~10,000	70	1~10	Cationic	0.03
SeraShine EM 505	Amodimethicone (and) Dimethicone (and) Laureth-23 (and) Laureth-6	<ul style="list-style-type: none">Superior conditioning performanceExcellent hair smoothnessEnhances dry combing and softness	A non-ionic macro emulsion of a blend of amino-modified silicone polysiloxane fluid and high molecular weight polydimethylsiloxane fluid specifically designed for use in hair care products requirable low yellowish and conditioning effect. Recommended usage level 2-5		220,000	2,000 ~5,000	60	< 1	Non-ionic	
SeraShine EM 512	Dimethicone (and) Amodimethicone (and) Laureth-23 (and) Polyquaternium-10 (and) Laureth-4		A non-ionic macro emulsion of a blend of amino-modified silicone polysiloxane fluid and high molecular weight Polydimethylsiloxane fluid specifically designed for use in hair care products requirable low yellowish and conditioning effect. Recommended usage level 1-5		150,000	30,000		1~10	Non-ionic	0.01

Multi-Functional Emulsions

Product Name	INCI Name	Benefits	Characteristics	Appearance	Internal Viscosity (cS at 25°C)	Emulsion viscosity (cS at 25°C)	Silicone contents (wt%)	Particle Size (µm)	Emulsifier Type
SeraShine EM 503	Dimethicone (and) Cocamidopropyl Betaine (and) Trideceth-7 (and) Guar Hydroxypropyltrimonium Chloride	<ul style="list-style-type: none">Superior conditioning performanceExcellent hair smoothnessEnhances dry combing and softness	An amphoteric emulsion of a high viscosity polydimethylsiloxane fluid with the addition of a guar gum for use in shampoo and conditioner formulations without the need for a deposition aid. Recommended level 2-5	Milky white liquid	500,000	8,000~20,000	65	28-42	Amphoteric
SeraShine EM 504	Dimethicone (and) Cocamidopropyl Betaine (and) Laureth-3 (and) Guar Hydroxypropyltrimonium Chloride					8,000~15,000		1~10	
SeraShine EM 509	Dimethicone (and) Trimethylsiloxysilicate (and) Poloxamer188 (and) Poloxamer 388 (and) 1,2-hexanediol	<ul style="list-style-type: none">Anti-frizz agentWash - off resistanceGlossSoft skin feel for aqueous base formulationsEasy to use in water based product	A non-ionic emulsion of resin blends imparts a soft feel to skin and hair. It is specifically designed to facilitate incorporation of resin blends into water based formulations. Recommended usage level 1-10	Opaque	800	-	55	Max. 5	Non-ionic
SeraShine EM 510	Dimethiconol (and) Decyl glucoside (and) Glycerine (and) 1,2-Hexanediol (and) Carbomer	<ul style="list-style-type: none">Biodegradable surfactant emulsionLeaves hair feeling softAnti-frizz agentGlossEasy to use in water based product.	A non-ionic emulsion of high viscosity polydimethylsiloxane fluid. It imparts a soft feel to skin and hair. Recommended usage level 1-10	Milky white to Slightly yellow liquid	80,000	20,000	65	1~15	
SeraSilk EM 602	Dimethicone / Vinyl Dimethicone Crosspolymer (and) C12-14 sec-Pareth-7	<ul style="list-style-type: none">Imparts a silky feel to skin and hairLeaves hair feeling softReduces shine on skin	A non-ionic water-based suspension of elastomeric silicone powder imparts silky feel to skin and hair. It is specifically designed to facilitate incorporation of elastomer powder into water based formulations. Recommended usage level 1-5	Milky white liquid	-	500~5,000	58	1~10	
SeraSilk EM 605	Dimethicone (and) Water (and) Glycerin (and) Butylene glycol (and) Glycereth-20 (and) Pentylene glycol (and) Dimethicone/Vinyl Dimethicone Crosspolymer (and) Phenoxyethanol (and) Carbomer (and) Amodimethicone(and) Sodium Hydroxide (and) Disodium EDTA	<ul style="list-style-type: none">Emulsion of crosslinked silicone elastomer blendsLight and smooth feel for aqueous base formulationsProvides soft, silky feel without greasy feelEasy to use cosmetic formulation	A transparent to translucent emulsion of elastomer blends imparts a silky feel to skin and hair. This product as a emulsifier free emulsion is specifically designed to facilitate incorporation of elastomer blends into water based formulations. Recommended usage level 1-10	Clear to Slightly hazy, Colorless to Slightly yellow gel	Max. 500	20,000 ~ 100,000	30	1 ~ 30	
SeraSilk EM 608	Dimethicone (and) Dimethicone / Vinyl Dimethicone Crosspolymer (and) Laureth-4 (and) Laureth-23 (and) 1,2-Hexanediol	<ul style="list-style-type: none">Using easy silicone elastomer blends to aqueous cosmetic productsImparts a silky feel to skin and hairReduces tackiness in formulations	A non-ionic emulsion of elastomer blends imparts a silky feel to skin and hair. It is specifically designed to facilitate incorporation of elastomer blends into water based formulations. Recommended usage level 1-70	Milky white liquid	130,000	1,000~15,000	75	1~15	
SeraSoft EM 703	Stearyl Dimethicone (and) Octadecene (and) Laureth-23 (and) Laureth-3	<ul style="list-style-type: none">Reduced combing time on wet and dry hairConditioning agentLeaves hair feeling soft	A non-ionic emulsion of a stearyl dimethicone provides strong conditioning performance. It is specifically designed to be used in aqueous based conditioning products for damaged hair. It can be used in combination with other dimethicone emulsions. Recommended usage level 0.5-2		-	500~2,000	30	0.5~5	

SeraSilk®
Silky silicone elastomers designed to present luxury to hair or skin care formulations where sensory excellence is required.



Elastomer Blends

Silky silicone elastomers designed to present luxury to hair or skin care formulations where sensory excellence is required.

Elastomer Blends

Product Name	INCI Name	Benefits	Characteristics	Appearance	Viscosity (cS at 25°C)	Gel content(%)	Base Oil
SeraSilk EL 60	Cyclopentasiloxane (and) Dimethicone / Vinyl Dimethicone Crosspolymer	<ul style="list-style-type: none">• Gives a light, silky, non-greasy skin feel• Mattifying effect• Imparts viscosity to W/O emulsions• Improves water resistance• Reduces tackiness in formulations• Improves skin adhesion for actives and pigments	A mixture of a high molecular weight crosslinked silicone elastomer in low viscosity silicone fluid. Recommended usage level 1-90	Slightly translucent paste	350,000	13	Cyclopentasiloxane
SeraSilk EL 61	Dimethicone (and) Dimethicone / Vinyl Dimethicone Crosspolymer				160,000	20	6cS Dimethicone Fluid
SeraSilk EL 63	Cyclopentasiloxane (and) Dimethicone / Vinyl Dimethicone Crosspolymer				380,000	14	Cyclopentasiloxane
SeraSilk EL 64	Dimethicone (and) Dimethicone / Vinyl Dimethicone Crosspolymer				400,000	20	2cS Dimethicone Fluid
SeraSilk EL 65					430,000	18	
SeraSilk EL 66					250,000	15	1.5cS & 2cS Dimethicone Fluid
SeraSilk EL 74	Dimethicone (and) Cyclopentasiloxane (and) Dimethicone / Vinyl dimethicone Crosspolymer			150,000	13	5cSt Dimethicone fluid and Cyclopentasiloxane	
SeraSilk EL 75	Dimethicone (and) Dimethicone / Vinyl dimethicone Crosspolymer				6cS Dimethicone Fluid		
SeraSilk EL 78	Dimethicone (and) Dimethicone / Vinyl dimethicone Crosspolymer				12	2cS Dimethicone Fluid	
SeraSilk EL 81	Dimethiconol (and) Isododecane (and) Dimethicone / Vinyl Dimethicone Crosspolymer					High transparent paste	130,000
SeraSilk EL 84	Cyclopentasiloxane (and) Dimethicone / Vinyl Dimethicone Crosspolymer	<ul style="list-style-type: none">• Gives a light, silky, and non-greasy skin feel• Matt effect• Non-greasy• Imparts viscosity to W/O emulsions"	SeraSilk EL 84 elastomer dispersion consists of 7% silicone elastomer dispersed in cyclopentasiloxane. The resulting product is a smooth, highly viscous clear gel which has unique sensory characteristics and ability to act as a thickening agent. The elastomer dispersion may be suitable for a wide variety of personal care applications. Recommended usage level 1.0-90	Transparent Paste	70,000	7	Cyclopentasiloxane
SeraSilk EL 86	Methyl Trimethicone (and) Dimethicone / Vinyl Dimethicone Crosspolymer	<ul style="list-style-type: none">• Gives Silky skin feeling• Efficient thickening agent• Matte effect• Good compatibility with silicones	SeraSilk EL 86 uses MTM base oil to produce a lightweight texture and a soft matte feel. SeraSilk EL 86 has a transparent appearance because of very lower degree of cross-link than general elastomer blends and maintains its clarity upon dilution in low molecular weight silicones.			10	Methyl Trimethicone
SeraSilk EL 10	Dimethicone (and) Dimethicone Crosspolymer	<ul style="list-style-type: none">• Gives soft and long lasting skin feel• Thickening agent• D4, D5 content is less than 0.1%.	SeraSilk EL 10 is a mixture of high molecular weight crosslinked silicone elastomer in Dimethicone-5cSt. It can be included in many products to enhance the skin feel, spreadability, and absorption of the finished product. Recommended usage level 1-90		250,000	17	5cS Dimethicone Fluid
SeraSilk AM 76	Cyclopentasiloxane (and) Cetearyl Dimethicone / Vinyl Dimethicone Crosspolymer	<ul style="list-style-type: none">• Excellent compatibility with organic oil• Soft skin feel & spreading ability• Thickening agent• Stabilizer for W/O and O/W emulsion.	A crosslinked gel contains a substituted alkyl functionality to increase organic compatibility in personal care formulations. High swelling capability in hydrocarbon oils and increase the structural viscosity of the oil phase. Smooth, silky feeling of elastomer and a good adhesion onto the skin due to the alkyl chain.	Slightly translucent paste	200,000	12	Cyclopentasiloxane
SeraSilk AM 80	Dimethicone (and) Cetearyl Dimethicone / Vinyl Dimethicone Crosspolymer					14	2cS Dimethicone Fluid
SeraSilk PD 69	Cyclopentasiloxane (and) Cyclohexasiloxane (and) Dimethicone / Vinyl dimethicone Crosspolymer	<ul style="list-style-type: none">• Using easy silicone elastomer powder to cosmetic product• Gives a light, silky, non-greasy skin feel• Matte effect• Imparts viscosity to W/O emulsions• May absorb sebum• Can be used in cold processes• Good rolling effect to make-up product	A mixture of a high molecular weight crosslinked silicone elastomer powder in a blend of cyclopentasiloxane and cyclohexasiloxane for a unique evaporation profile. Enhance the skin feel, spreadability, absorption and "soft-focus" effect of the finished product. Recommended usage level 1-95	Translucent paste		23	Cyclopentasiloxane (and) Cyclohexasiloxane
SeraSilk PD 71	Cyclopentasiloxane (and) Dimethicone / Vinyl dimethicone Crosspolymer						Cyclopentasiloxane
SeraSilk PD 72	Dimethicone (and) Dimethicone / Vinyl Dimethicone Crosspolymer					26	2cS Dimethicone Fluid
SeraSilk PD 82	Dimethiconol (and) Trisiloxane (and) Dimethicone / Vinyl Dimethicone Crosspolymer						130,000



SeraSnow®
A light range of silicone powders and treatments to improve the feel, compatibility or water resistance of products where these unique products are needed.



Silicone Powders & Treatments

Product Name	INCI Name	Benefits	Characteristics	Appearance	Viscosity (cS at 25oC)	H-contents (mmol/g)	Flash Point (°C)	Particle Size (µm)
SeraSnow SF 10	Methicone	<ul style="list-style-type: none">• Surface coating for pigments• Soft, silky texture	A non-toxic, hydrophobic surface treatment for pigments. Methicone surface treating ensures pigment adhesion to the skin and improves ease of integrating pigments into W/Si foundation products.	Colourless liquid	20	15.5	100	-
SeraSnow SF 11	Dimethicone / Methicone Copolymer	<ul style="list-style-type: none">• Highly reactive• Surface coating for pigments• Soft, silky texture	Polysiloxanes, which contains silicon-bonded hydrogen atoms. This crosslinking agent is used to vulcanize vinyl-group containing silicones. For the reaction work, the presence of a precious metal catalyst is necessary. The optimum cure ratio is usually determined by measuring the hardness of cured elastomer at different ratios.		40	7.3		-
SeraSnow SP 13	Dimethicone / Vinylmethicone Crosspolymer	<ul style="list-style-type: none">• Silicone elastomer powder• Gives a light, silky, non-greasy skin feel• Matte effect• Imparts viscosity to W/O emulsions• May absorb sebum• Can be used in cold processes• Good rolling effect to make-up product	A 100% active high molecular weight crosslinked silicone elastomer powder. SeraSnow SP 13 can be included in many products to enhance the skin feel, spreadability, absorption and "soft-focus" effect of the finished product. Can also be used in dry shampoo formulations to absorb natural oils whilst offering a soft feel	White powder	-	-	-	2~18
SeraSnow SP 14	Vinyl Dimethicone / Methicone Silsesquioxane Crosspolymer	<ul style="list-style-type: none">• Silicone resin coated elastomer powder• Excellent dispersibility, flowability, non-agglomeration• Provide soft-focus effect, wrinkle cover• High oil and sebum absorption : dry, silky smooth skin feel	SeraSnow SP 14 consists of internal spherical silicone elastomer powder and an external shell of silicone resin powder. It is designed to improve the agglomeration of the silicone elastomer powder. So It has excellent dispersibility and flowability It can be included in many products to enhance the skin feel, spreadability, absorption and soft-focus- effect of the finished product. It is excellent for wrinkle-smoothing formulations		-	-	-	5~20



SeraSkin®
Specialist skin active protecting systems
for creating clear gels that can deliver
actives, offer strong wash off resistance
and protect the skin in woundcare
applications.



Skin Adhesion Polymers

Product Name	INCI Name	Benefits	Characteristics	Appearance	Viscosity (cS at 25°C)	Gel Time (25°C)	Penetration (mm*10)
SeraSkin RS 10A	Bis-Vinyl Dimethicone	<ul style="list-style-type: none">Forms a clear protective gel layer	This 2-part blend crosslinks to create a transparent gel. Can be used in mask pack and woundcare applications.	Transparent liquid	450	60 - 120 mins	180~230 mins
SeraSkin RS 10B	Vinyl Dimethicone (and) Hydrogen Dimethicone				260		

